

PROJECT CONNECT OFFERS
A FULL SPECTRUM OF
TRANSITIONAL
EMPLOYMENT SERVICES
AND SOCIAL SUPPORT



360 HOOVER ST NE
MINNEAPOLIS, MN
55413

For more information, please call
612-331-5958 or email:

**Karen Junker, Associate Director of
Competitive Employment Services**
kjunker@accessability.org

Alice Budach, Pathway Navigator
abudach@accessability.org



PROJECT CONNECT



Staff and program participants work together to create and implement a vocational plan that leads to successful employment and also empowers people to achieve personal goals.

We individualize planning and implementation with the support it takes to succeed.



mn EMPLOYMENT AND
ECONOMIC DEVELOPMENT

**Transitional
Employment
Services:**

*Gain real skills and
establish a work
history.*

TRANSITIONAL EMPLOYMENT SERVICES

The Project Connect program provides training to economically disadvantaged adults who have a limited, lapsed, or no work history.

Education



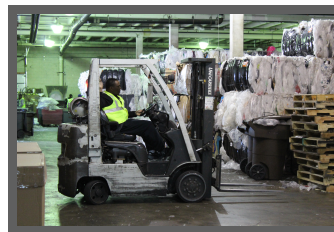
- Adult Basic Education
- Financial Literacy and Budgeting
- Essential Business Skills Training

Job Readiness



- Resume Writing
- Mock Interviewing
- Job Search Strategy
- Work Opportunities with AccessAbility
- Community-Based Placement
- Follow-Up and Retention Services

Vocational Training

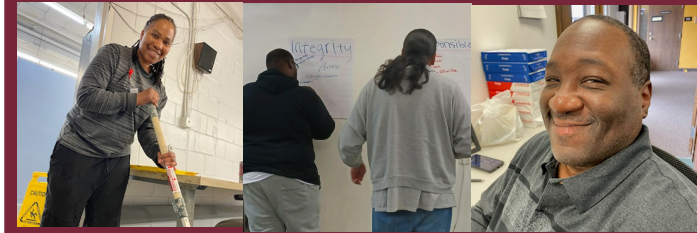


- Forklift/Scissor Lift Certification
- OSHA Certificate
- Opportunities for training in CDL, CNC, Welding, Plumbing, and more.

Project Connect works with Fischer ReEntry Consulting LLC to provide classes and job readiness training

WORKS OF HEART

Works of Heart is AccessAbility's social enterprise. Through the manufacturing of gift and home decor, WOH gives persons served an opportunity to learn skills and establish a work history.



People we serve work on Works of Heart and are able to learn numerous transferable skills, including:

- Manufacturing
- Wood cutting
- Laser Cutting
- Painting & staining
- Quality Control
- Pick/pack/ship
- Warehousing
- Printing
- Assembly

We have four tracks for paid work experience: Print Production, Warehouse/Shipping/Receiving, Wood Shop, and Facilities. This interim position assists with bridging to competitive jobs in the community



PROJECT CONNECT

AccessAbility's mission is to provide opportunities for self-sufficiency for people with barriers to employment and community inclusion.

Located in Northeast Minneapolis, Project Connect offers a full spectrum of transitional employment services and social support. Project Connect serves a diverse community of people, many of whom face barriers to sustainable employment and community inclusion.

By partnering with businesses and organizations throughout the Twin Cities, we are able to provide innovative programs and services to help individuals along their path to self-sufficiency.

All Project Connect Programs are person centered. We encourage the individual to explore their own ideas, interests & preferences to develop an Individual Employment Plan to meet their goals.